

Eva

Humidifier – Luftbefeuchter – Humidificateur d'air

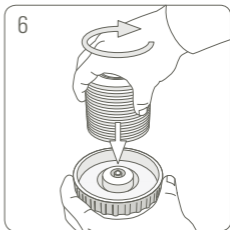
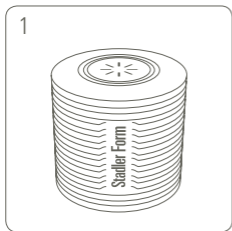


QUICK SETUP GUIDE

Setting up

SOAK CARTRIDGE
KARTUSCHE EINWEICHEN
TREMPER LA CARTOUCHE

1

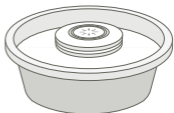


3

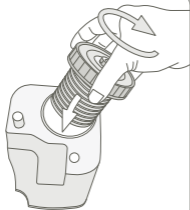


4

24h

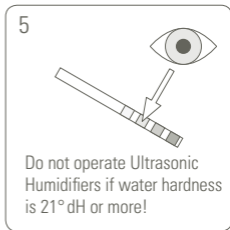
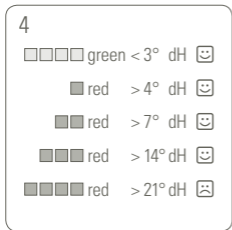
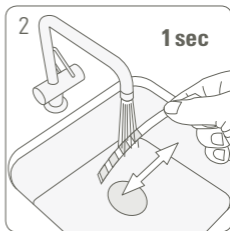
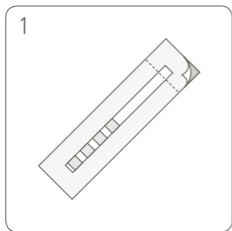


7



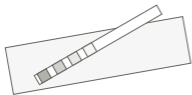
CHECK WATER HARDNESS
(WITH TESTING STRIP)
WASSERHÄRTE ERMITTELN
(MIT TESTSTREIFEN)
DÉTERMINER LA DURETÉ DE L'EAU
(AVEC LA BANDELETTE TEST)

2



3

1 min



NOTE: Do not operate Eva with decalcified water out of a decalcification system that uses the principle of an ion exchanger (salt is added to the water). The salt contained in the water may lead to white dust accumulation around the appliance.

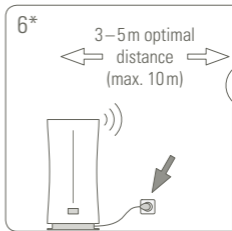
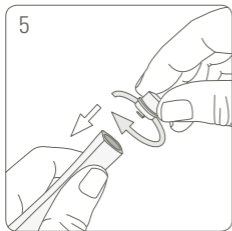
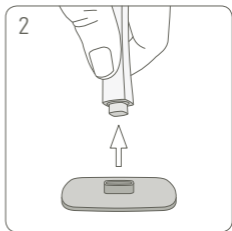
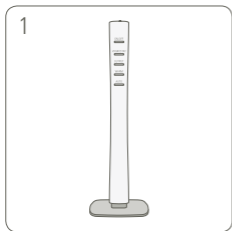


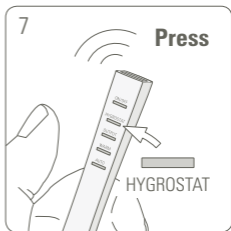
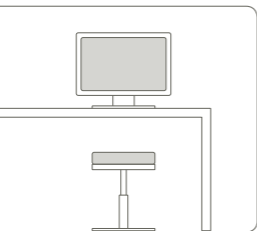
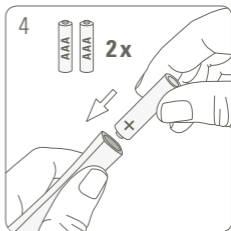
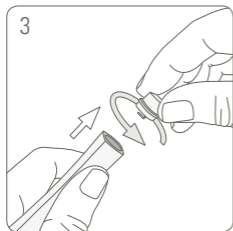
If your testing strip is missing, please contact us on

STADLERFORM.COM/CONTACT

POSITION & ACTIVATE
REMOTE SENSOR™
REMOTE SENSOR™ POSITIONIEREN
UND AKTIVIEREN
POSITIONNER ET ACTIVER LE
REMOTE SENSOR™

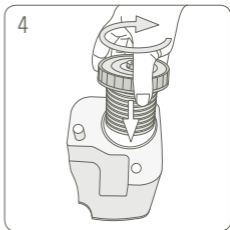
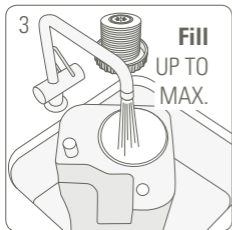
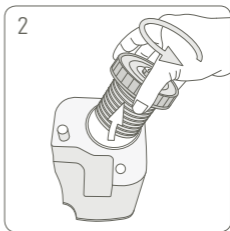
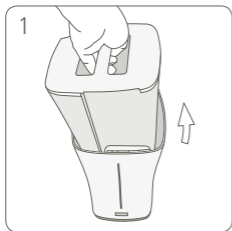
3





FILL WATER TANK
WASSERTANK FÜLLEN
REMPLEISSER LE RÉSERVOIR D'EAU

4





COMMENTS FOR USA COMMENTAIRES POUR LES ÉTATS-UNIS

3 POSITION & ACTIVATE REMOTE SENSOR™
N° 6 & 10 – 16 pi optimal distance (max. 32 pi)

POSITIONNER ET ACTIVER LE REMOTE SENSOR™
N° 6 & 10 – 16 pi distance optimale (max. 32 pi)

6 DECALCIFICATION
N° 7, 8, 9 & mix 3,4 fl. oz. + 3,4 fl. oz. (total 6,8 fl. oz.)
N° 17 & please rinse with 6,8 fl. oz. of water

DÉCALCIFICATION
N° 7, 8, 9 & mix 3,4 fl. oz. + 3,4 fl. oz. (total 6,8 fl. oz.)
N° 17 & veuillez svp rincer avec 6,8 fl. oz. de l'eau

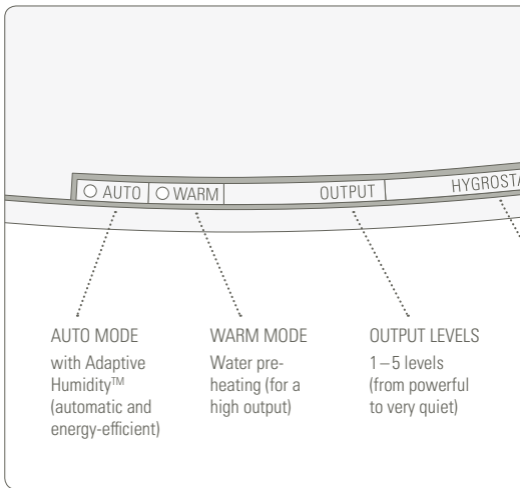


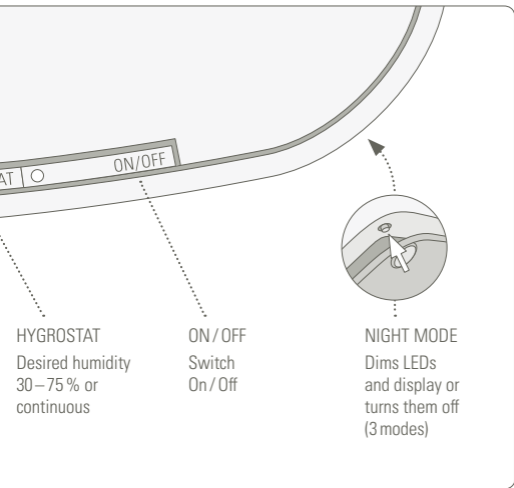
WATCH VIDEO

Operation

OPERATION
BEDIENUNG
MANIPULATION

5

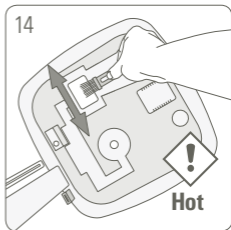
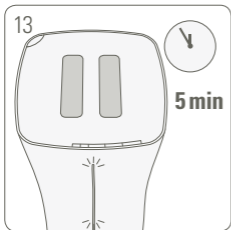
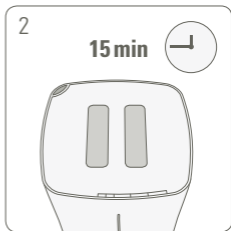
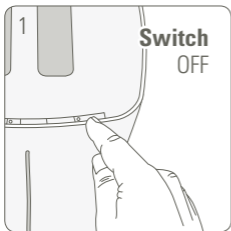


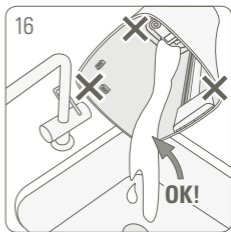
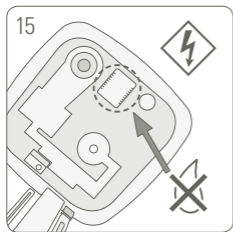
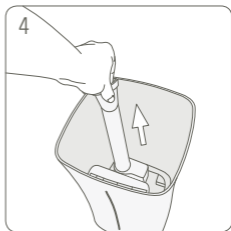
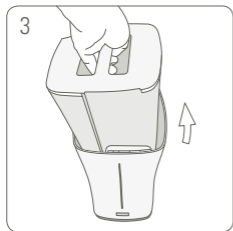


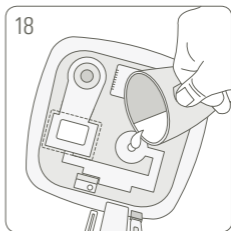
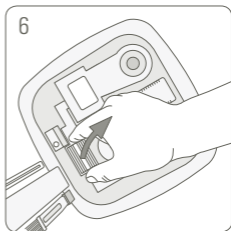
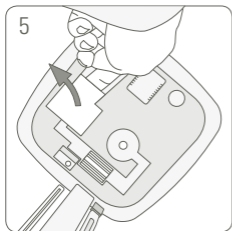
Cleaning

DECALCIFICATION
ENTKALKUNG
DÉCALCIFICATION

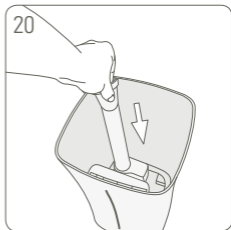
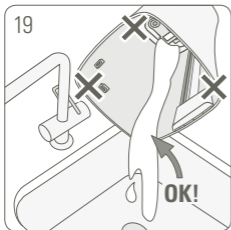
6

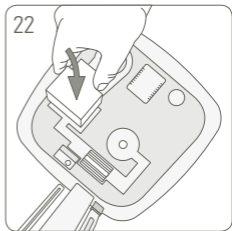
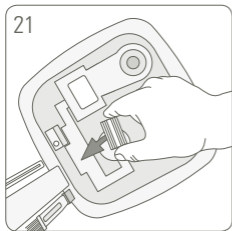
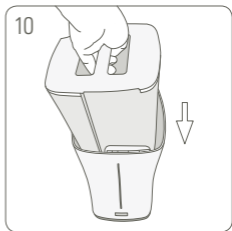
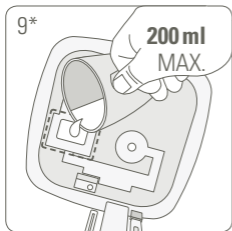


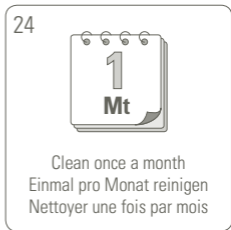
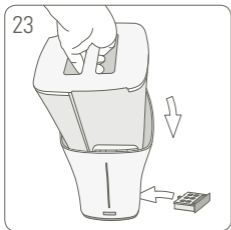
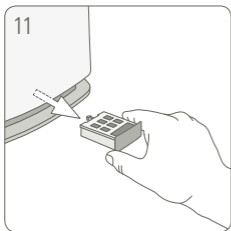




mix







Stadler Form®

SWISS DESIGN SINCE 1998



STADLER FORM OF SWITZERLAND

Chamerstrasse 174, 6300 Zug, Switzerland, Phone +41 41 720 48 48
www.stadlerform.com

